

NOVIA PMS PERFORMANCE UPDATE

FOR PROFESSIONAL FINANCIAL ADVISERS ONLY

NOVIA PMS Cumulative Performance (data to 30/06/2021)

Outperformance	Year to Date	1 Year	2 Year	3 Year	4 Year	5 Year	6 Year	7 Year	8 Year	9 Year	10 Year	11 Year	12 Year	Start Date (01/11/2008)
Portfolio 0	1.60	5.05	6.16	8.01	10.99	19.32	21.53	24.71	30.80	41.40	44.90	55.05	75.43	83.12
30/70 Comp. Mny Mrkt & IA Mixed 0-35%	1.18	4.78	5.94	8.50	9.58	15.35	18.10	20.95	24.98	31.30	33.57	41.72	56.26	63.78
Portfolio 1	2.41	7.02	8.31	10.68	14.35	25.39	28.08	32.82	40.33	54.54	57.34	71.33	95.55	105.77
IA Mixed Investment 0-35%	1.71	6.86	8.22	11.68	13.18	21.66	25.73	30.00	36.21	44.19	47.17	58.37	78.61	89.14
Portfolio 2	3.90	11.77	13.49	16.67	22.78	38.48	41.66	49.68	60.41	78.92	80.59	98.28	127.44	144.23
IA Mixed Investment 20-60%	4.49	12.74	12.03	15.28	18.09	32.09	34.56	40.91	50.86	66.04	64.81	80.88	106.41	117.30
Portfolio 3	4.73	14.41	16.11	19.66	27.07	46.45	50.56	60.71	72.53	96.90	96.19	123.81	164.66	192.26
50/50 IA Mixed 40-85% & 20-60%	5.53	15.00	14.59	18.33	22.63	39.79	42.42	50.63	62.11	82.40	78.51	100.16	131.07	145.56
Portfolio 4	5.25	15.77	17.50	21.20	29.27	51.53	55.45	67.28	80.87	109.67	106.38	136.92	183.76	216.33
IA Mixed Investment 40-85%	6.58	17.29	17.16	21.40	27.29	47.84	50.64	60.91	74.05	100.19	93.13	121.22	158.28	177.03
Portfolio 5	5.81	17.81	19.58	23.46	32.41	58.05	62.43	76.09	90.80	125.20	119.11	156.03	211.06	253.97
50/50 IA Mixed 40-85% & Flexible	7.02	18.38	18.50	22.40	28.45	50.32	52.67	63.22	76.27	102.97	93.07	123.38	162.19	183.04
Portfolio 6	6.22	19.00	20.76	24.91	34.18	61.09	66.93	82.37	97.37	135.17	126.97	168.07	229.90	283.05
IA Flexible Investment	7.45	19.48	19.86	23.39	29.61	52.82	54.70	65.53	78.50	105.75	92.95	125.48	166.03	189.02

NOVIA PMS Discrete Performance

Outperformance	2009	2010	2011	2012	2013	2014	2015	2016	2017	2018	2019	2020
Portfolio 0	14.31	7.20	1.33	7.54	6.60	3.07	2.49	5.01	5.22	-2.45	7.28	2.13
30/70 Comp. Mny Mrkt & IA Mixed 0-35%	9.42	6.25	1.15	5.03	3.46	3.39	0.31	5.95	3.40	-2.23	6.23	2.87
Portfolio 1	14.93	8.25	0.75	8.40	9.04	3.25	3.66	6.08	6.58	-2.78	8.55	3.03
IA Mixed Investment 0-35%	11.71	7.77	1.38	6.22	4.20	4.84	0.38	8.47	4.84	-3.35	8.70	3.90
Portfolio 2	13.97	9.85	-0.88	9.48	10.69	5.10	4.49	7.72	9.56	-3.51	11.25	5.74
IA Mixed Investment 20-60%	15.90	8.56	-1.89	8.35	8.85	4.85	1.21	10.32	7.16	-5.10	11.84	3.51
Portfolio 3	21.41	12.90	-2.83	11.54	12.18	5.44	4.99	9.62	11.97	-4.51	12.95	6.93
50/50 IA Mixed 40-85% & 20-60%	18.00	10.43	-3.72	9.16	11.64	4.86	1.94	11.60	8.56	-5.60	13.80	4.42
Portfolio 4	23.70	14.42	-4.42	12.31	14.29	5.51	5.93	9.88	13.51	-5.20	14.00	7.48
IA Mixed Investment 40-85%	20.12	12.29	-5.51	9.97	14.47	4.87	2.66	12.87	9.98	-6.11	15.78	5.32
Portfolio 5	27.20	16.24	-6.02	13.73	15.50	5.75	6.38	11.39	15.15	-5.68	14.92	8.52
50/50 IA Mixed 40-85% & Flexible	22.07	13.44	-7.13	10.05	14.51	4.88	2.33	13.34	10.59	-6.41	15.72	6.01
Portfolio 6	31.08	17.87	-7.27	14.41	16.01	6.01	7.31	12.17	15.49	-5.96	15.73	9.03
IA Flexible Investment	24.03	14.57	-8.73	10.13	14.54	4.89	1.99	13.82	11.21	-6.72	15.66	6.70

NOVIA PMS Defensive Characteristic 5 Year Ratios (data to 30/06/2021)

[Click here for ratio definitions](#)

Outperformance	Alpha	Beta	Downside Risk	Info. Ratio Rel.	Max Drawdown	Max Loss	Sharpe	Sortino	Volatility	Downside Capture	r2
Portfolio 0	0.36	1.11	4.84	0.74	-6.92	-6.92	0.39	0.33	4.10	110.83	0.96
30/70 Comp. Mny Mrkt & IA Mixed 0-35%	0.00	1.00	4.03	0.00	-6.00	-6.00	0.25	0.22	3.60	100.00	1.00
Portfolio 1	0.94	0.92	5.63	0.54	-8.03	-8.03	0.54	0.47	4.83	88.72	0.96
IA Mixed Investment 0-35%	0.00	1.00	5.76	0.00	-8.59	-8.59	0.39	0.35	5.17	100.00	1.00
Portfolio 2	1.72	0.86	7.29	0.64	-10.53	-10.53	0.73	0.65	6.52	82.07	0.98
IA Mixed Investment 20-60%	0.00	1.00	8.61	0.00	-12.89	-12.89	0.50	0.43	7.52	100.00	1.00
Portfolio 3	1.63	0.89	8.54	0.68	-12.38	-12.38	0.77	0.69	7.67	84.58	0.98
50/50 IA Mixed 40-85% & 20-60%	0.00	1.00	9.50	0.00	-14.15	-14.15	0.58	0.52	8.51	100.00	1.00
Portfolio 4	1.54	0.86	9.24	0.27	-13.37	-13.37	0.80	0.72	8.33	80.71	0.98
IA Mixed Investment 40-85%	0.00	1.00	10.67	0.00	-15.41	-15.41	0.64	0.58	9.55	100.00	1.00
Portfolio 5	1.58	0.93	10.17	0.67	-14.46	-14.46	0.84	0.75	9.05	86.56	0.98
50/50 IA Mixed 40-85% & Flexible	0.00	1.00	11.00	0.00	-15.47	-15.47	0.67	0.59	9.64	100.00	1.00
Portfolio 6	1.40	0.96	10.60	0.75	-15.03	-15.03	0.85	0.76	9.46	89.88	0.98
IA Flexible Investment	0.00	1.00	11.10	0.00	-15.53	-15.53	0.70	0.62	9.75	100.00	1.00

Past performance is not a reliable indicator of future performance, please refer to our important information on the back page for a full list of risk warnings.

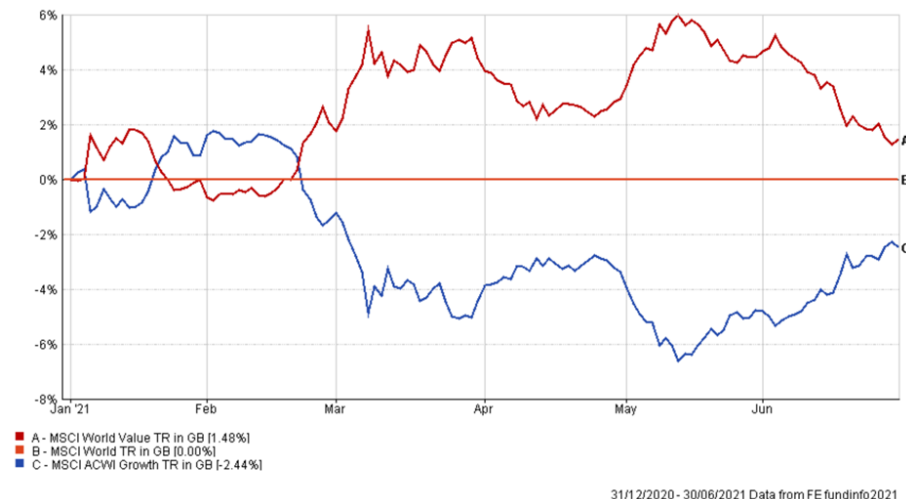
NOVIA PMS PERFORMANCE UPDATE

FOR PROFESSIONAL FINANCIAL ADVISERS ONLY

We have previously highlighted the ongoing debate in the investment world of what the winners will be in a post lockdown world. Some argue that the US Technology stocks that have dominated the working from home environment will continue to do so. Others say that forced adoption of technology has not wholly converted consumers but has instead highlighted web-based goods/ services limitations. There is now pent up demand for things like High Street shopping, restaurants, and even more so for foreign holidays. We said then that we do not know what the answer is other than that the potential range of outcomes is broader than it has been for quite some time.

This point has been proven true over the first half of the year as Technology stocks suffered two falls and came into the middle of May with equity returns near zero. Since then, they have rallied tremendously and have produced near double-digit returns to the end of June. Meanwhile, areas once out of favour performed strongly up to May and struggled as technology stocks made their come back. We would expect this fluctuation between styles to last for some time longer, a situation we believe can be taken advantage of with sufficient diversification and by utilising various investment styles.

Value vs Growth Year to Date (Relative to MSCI World)



Considering our diversification emphasis, it will come as little surprise that the portfolios have underperformed in an environment led upwards by a very small subsector of the total market. However, this is not to say that we have had no allocation to June's large growth/technology winners.

The charts below highlight the best and worst-performing equity funds in the range through June. As you would expect, the best performing funds have overweight positions in growth, incorporating 3 Baillie Gifford funds across Europe, Global and Emerging Market equities. Interestingly, Rathbone Global Opportunities and Baillie Gifford International top this month's list despite being the worst performers in May. Conversely, the worst-performing funds in June were UK equity funds though it is worth noting that each of these funds was in the portfolio's top ten best-performing funds until the start of the growth rally on May 13th 2021. After the first seven trading days of July, we see the UK back at the top of developed equity markets, followed by the US.

Best & Worst performing Novia PMS Equity Funds in June

Name	Performance (%)
Baillie Gifford International	6.83
Rathbone Global Opportunities	6.05
Baillie Gifford Emerging Markets Growth	4.88
L&G US Index Trust	4.59
Baillie Gifford European	4.35

Name	Performance (%)
JOHCM UK Dynamic	-0.13
Franklin UK Equity Income	-0.40
Polar Capital UK Value Opportunities	-1.59
Man GLG Income	-2.01
Artemis UK Select	-3.25

Some information displayed may be short term in nature to demonstrate performance over a specific time period. Please contact IBOSS for long term data, including since launch and/or 5 years. Past performance is not a reliable indicator of future performance, please refer to our important information on the back page for a full list of risk warnings.

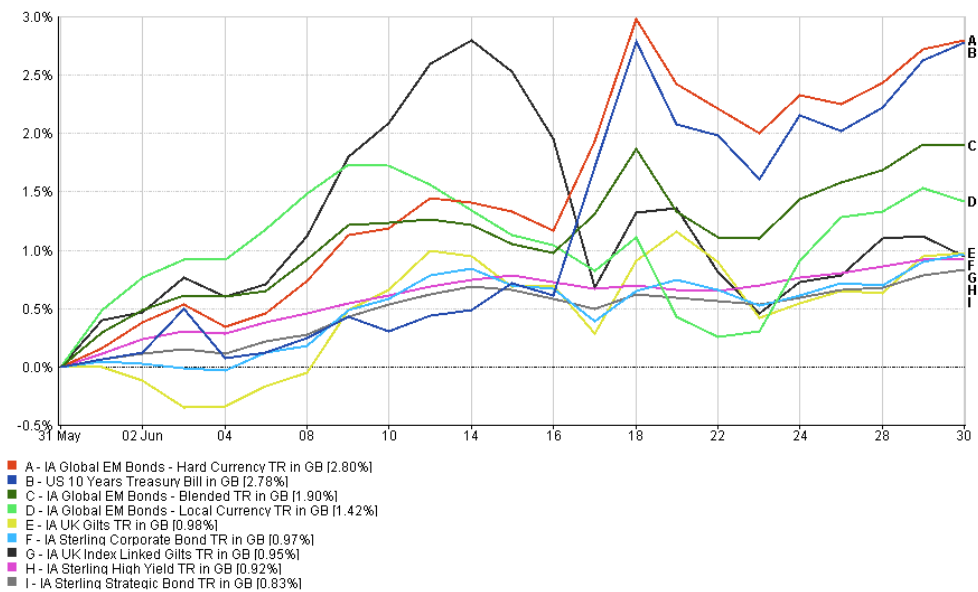
NOVIA PMS PERFORMANCE UPDATE

FOR PROFESSIONAL FINANCIAL ADVISERS ONLY

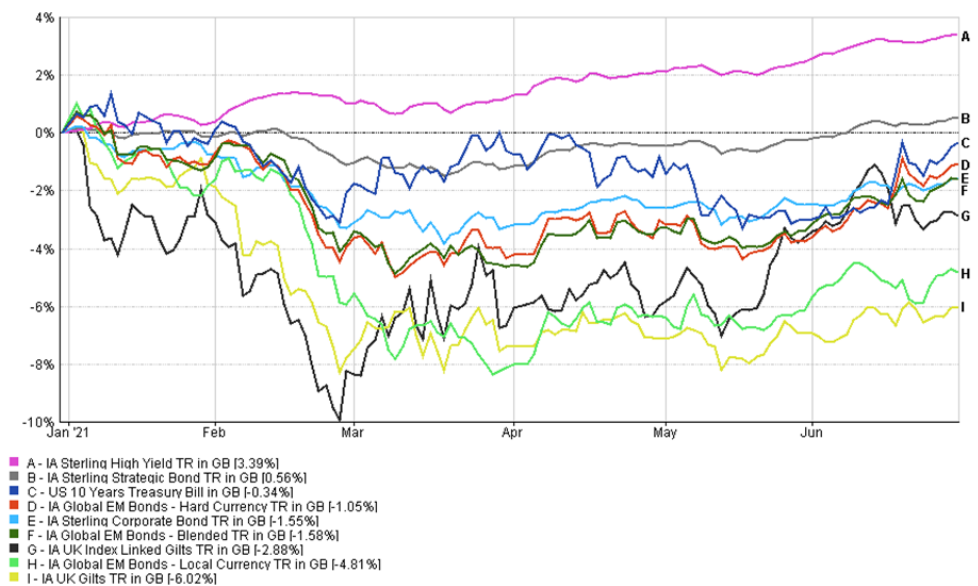
Fixed Income Performance

Though our underweight position in sovereign bonds and longer-dated assets has made a meaningful contribution to relative returns this year, this fixed income positioning hindered performance in June. Sovereigns, and treasuries, performed well with the latter producing returns of almost 3% in June alone, leaving the asset close to flat for 2021 in Sterling terms. In short, a significant allocation to sovereigns would have contributed to returns in June (fig.1); however, we still believe these will offer poor value over the longer term. Year to date (fig.2) and only the 'high' yield sector has really added to portfolio returns, and in this space, we prefer the equity risk. The risk-return profile for the high yield (junk bond) sector is the worst in history.

1 Month Fixed Income Performance to 30/06/2021 (fig.1)



Year to Date Fixed Income Performance to 30/06/2021 (fig.2)



Some information displayed may be short term in nature to demonstrate performance over a specific time period. Please contact IBOSS for long term data, including since launch and/or 5 years. Past performance is not a reliable indicator of future performance, please refer to our important information on the back page for a full list of risk warnings.

NOVIA PMS PERFORMANCE UPDATE

FOR PROFESSIONAL FINANCIAL ADVISERS ONLY

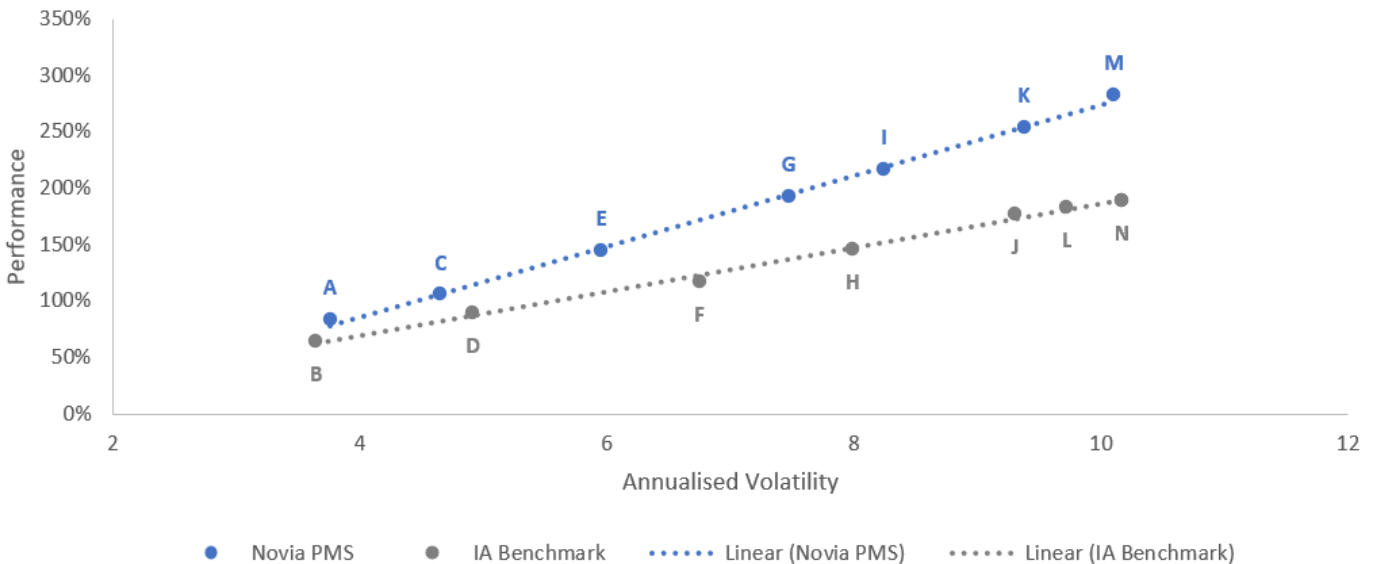
NOVIA PMS Ratios from Start of Data (01/11/2008 to 30/06/2021)

	Alpha	%	Beta	%	Downside Risk	%	Info. Ratio Rel.	%	Jensens Alpha	%	Max Drawdown	%	Max Loss	%	r2	%	Sharpe	%	Sortino	%	Tracking Error	%	Treynor	%	Volatility	%
Portfolio 1	1.23	5	0.89	10	4.81	5	0.40	20	1.01	15	-8.03	29	-8.03	29	0.88	20	0.83	1	0.80	10	1.66	1	4.34	10	4.65	5
Portfolio 2	1.76	7	0.86	13	6.19	7	0.59	4	1.49	10	-10.53	13	-10.53	17	0.96	1	0.89	1	0.86	5	1.57	1	6.14	7	5.96	7
Portfolio 4	2.08	10	0.87	15	8.18	6	0.55	10	1.82	11	-13.37	22	-13.37	23	0.97	2	0.91	4	0.92	6	1.93	1	8.63	8	8.24	6
Portfolio 6	2.48	15	0.98	35	10.09	22	1.16	1	2.43	15	-15.03	18	-15.03	21	0.96	2	0.91	5	0.91	2	1.94	1	9.42	11	10.11	25

Quartiles Key: Colour code explanation of squares in tables representing the quartiles.



NOVIA PMS Risk/Return Profiles from Start of Data (01/11/2008 to 30/06/2021)



Key	Portfolio	Performance	Volatility
A	Portfolio 0	83.12%	3.76
B	30/70 Comp. Mny Mrkt & IA Mixed 0-35%	63.78%	3.65
C	Portfolio 1	105.77%	4.65
D	IA Mixed Investment 0-35%	89.14%	4.92
E	Portfolio 2	144.23%	5.96
F	IA Mixed Investment 20-60%	117.30%	6.75
G	Portfolio 3	192.26%	7.47
H	50/50 IA Mixed 40-85% & 20-60%	145.56%	7.99
I	Portfolio 4	216.33%	8.24
J	IA Mixed Investment 40-85%	177.03%	9.31
K	Portfolio 5	253.97%	9.38
L	50/50 IA Mixed 40-85% & Flexible	183.04%	9.72
M	Portfolio 6	283.05%	10.11
N	IA Flexible Investment	189.02%	10.17

Outperformance

A blue filled box indicates outperformance.

Past performance is not a reliable indicator of future performance, please refer to our important information on the back page for a full list of risk warnings.



This communication is designed for professional financial advisers only and is not approved for direct marketing with individual clients. It does not purport to be all-inclusive or contain all of the information which a proposed investor may require in order to make a decision as to whether to invest in the portfolio. Nothing in this document constitutes a recommendation suitable or appropriate to a recipient's individual circumstances or otherwise constitutes a personal recommendation. Past performance is no guarantee of future performance. The performance of the IBOSS PMS portfolios is not a guide to the potential performance of the IBOSS Asset Management MPS discretionary model portfolios or OEIC Fund Range. The value of an investment and the income from it can fall as well as rise and investors may get back less than they invested.

Quoted yields are based on the 12 months distributions by the funds in the portfolios and are not guaranteed. Risk factors should be taken into account and understood including (but not limited to) currency movements, market risk, liquidity risk, concentration risk, lack of certainty risk, inflation risk, performance risk, local market risk and credit risk.

It is the responsibility of the Financial Adviser to ensure they are satisfied with the research undertaken by IBOSS Limited in relation to the investments included within each model portfolio. Copies of which are available on written request.

Data is provided by Financial Express (FE). Care has been taken to ensure that the information is correct but FE neither warrants, neither represents nor guarantees the contents of the information, nor does it accept any responsibility for errors, inaccuracies, omissions or any inconsistencies herein. Please note FE data should only be given to retail clients if the IFA firm has the relevant licence with FE.

IBOSS Asset Management is authorised and regulated by the Financial Conduct Authority. Financial Services Register Number 697866.

IBOSS Limited (Portfolio Management Service) is a non-regulated organisation and provides model portfolio research and outsourced white labelling administration service to support IFA firms, it is owned by the same Group, METNOR Group Holding Limited who own IBOSS Asset Management Limited.

Registered Office: 2 Sceptre House, Hornbeam Square North, Harrogate, HG2 8PB. Registered in England No: 6427223.

CONTACT INFORMATION

IL 32.7.21

IBOSS Asset Management
2 Sceptre House
Hornbeam Square North
Harrogate, North Yorkshire
HG2 8PB

Office: 01423 878840
Email: enquiries@ibossltd.co.uk
Website: www.ibossam.com

Business Development Team

Tracey Atkin:
tracey@ibossltd.co.uk / 07719 327524
Kevin Morrison:
kevin@ibossltd.co.uk / 07891 814345
Tanya Legge:
tanya@ibossltd.co.uk / 07902 307277